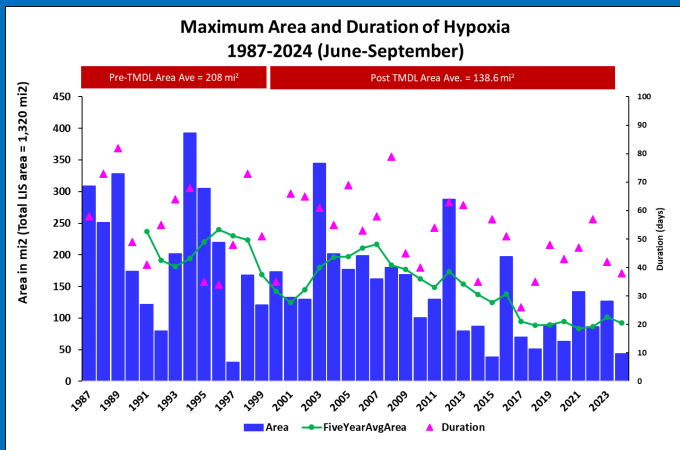
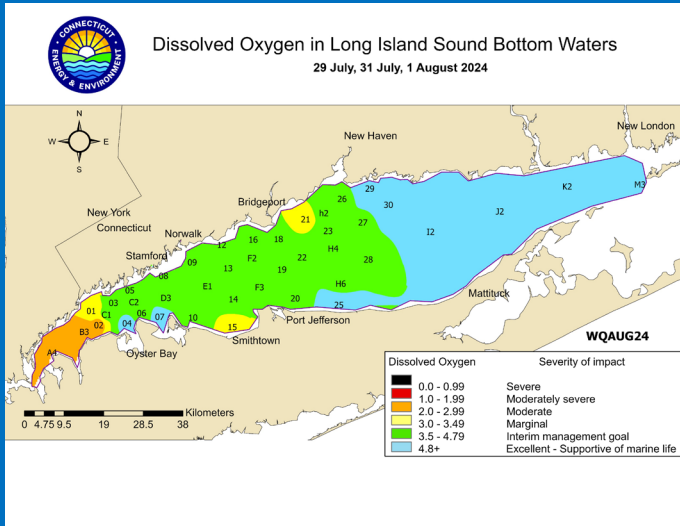


2024 Hypoxia Season Quick Facts



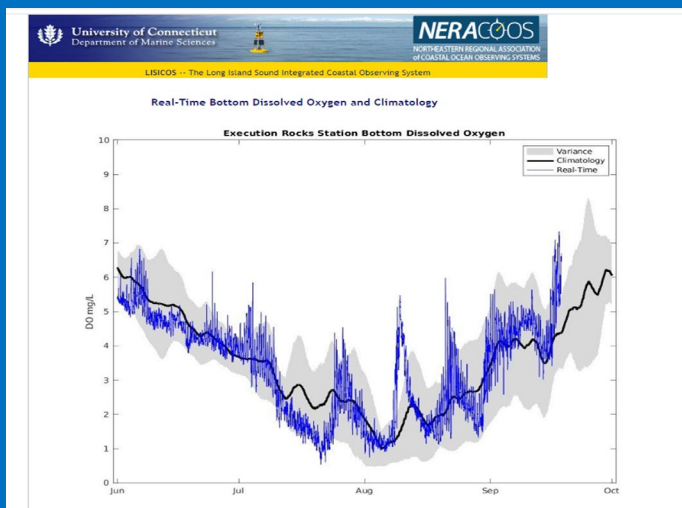
CTDEEP Data

5/30/24-8/28/24

- Date of onset- 7/11/24
- End date- 8/28/24
- Two periods- 32 days from 7/11-8/11/24 & 6 days from 8/23-8/28/24
- Duration: 38 days total
- Maximum Area: 112.4 km² (43.4 mi²) during WQAUG24 survey (7/29-8/1/24)
- Minimum Dissolved Oxygen Concentration Observed during CTDEEP cruises: 2.25 mg/L at Station A4 during WQAUG24 survey
- Total of 7 Cruises, 246 stations visits
- Observed DO below 3.0 during 6 site visits

Long Island Sound Water Quality Monitoring Program

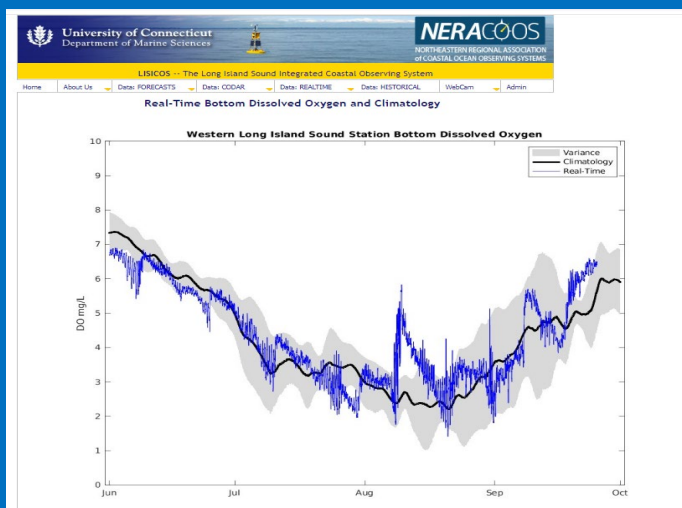
2024 Hypoxia Season Quick Facts



LISICOS Data – Execution Rocks

6/1/24-9/25/24

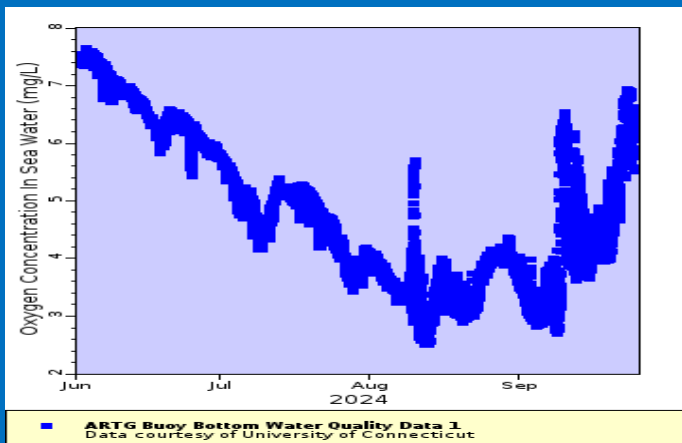
- 46.97 days ≤ 3.0 mg/L
- 28.86 days ≤ 2.0 mg/L
- 1.33 days ≤ 1.0 mg/L
- Minimum DO: 0.54 mg/L on 7/21/24



LISICOS Data – Western LIS

6/1/24-9/25/24

- 18.97 days ≤ 3.0 mg/L
- 0.74 days ≤ 2.0 mg/L
- 0.00 days ≤ 1.0 mg/L
- Minimum DO: 1.41 mg/L on 7/21/24



LISICOS- Art G

6/1/24-9/25/224

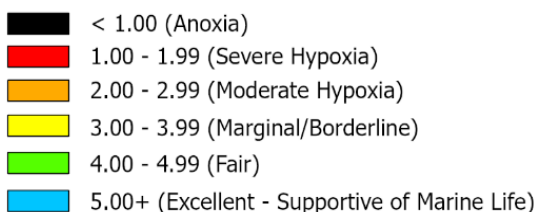
Minimum DO: 2.5 mg/L on 8/12/24

2024 Hypoxia Season Quick Facts

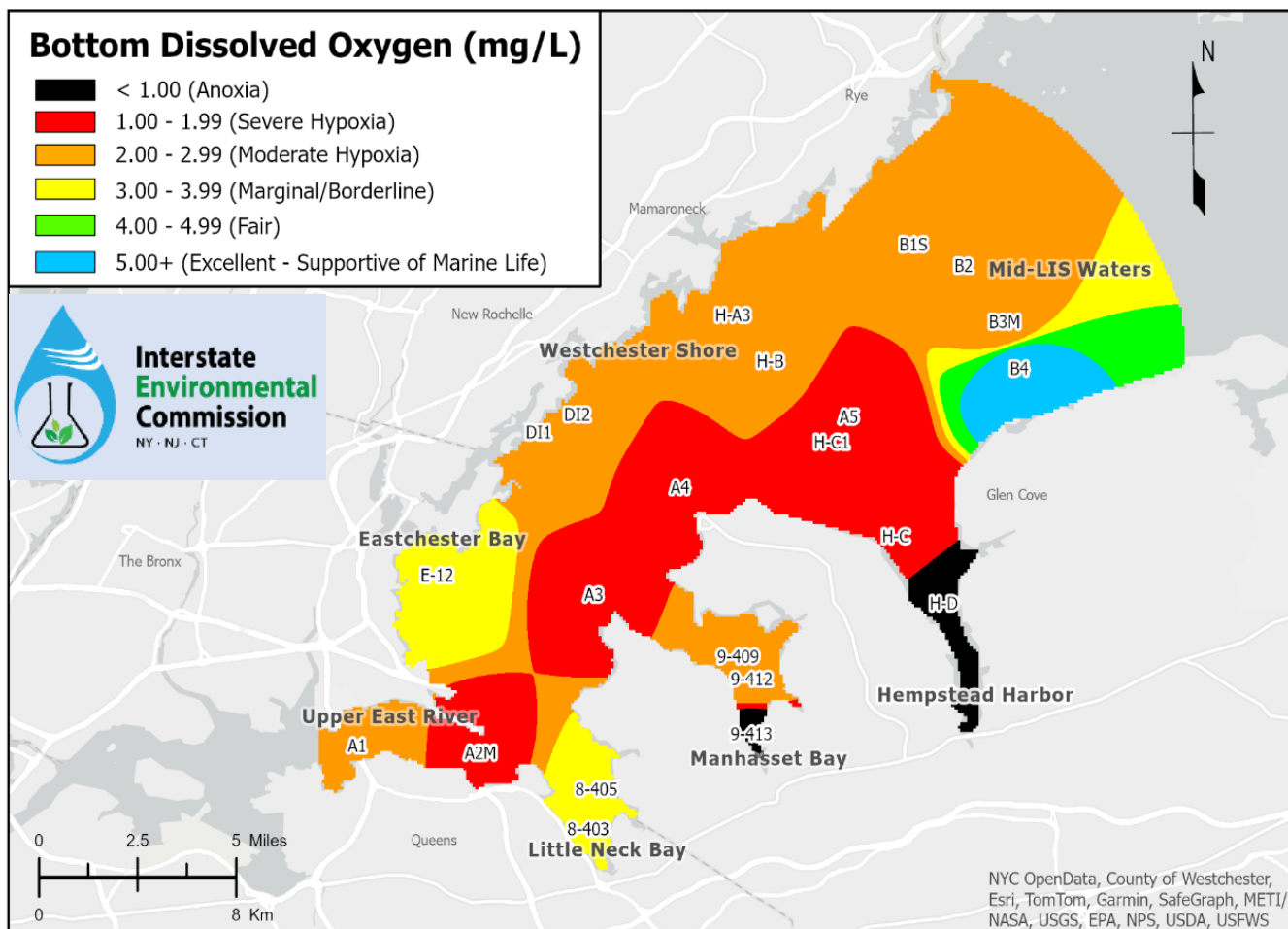
IEC Data:

- Minimum Dissolved Oxygen Concentration Observed during IEC cruises: 0.76 mg/L at Station 9-413 (Manhasset Bay) during Run #7 conducted 8/6/24

Bottom Dissolved Oxygen (mg/L)



**Interstate
Environmental
Commission**
NY · NJ · CT



NYC OpenData, County of Westchester, Esri, TomTom, Garmin, SafeGraph, METI/NASA, USGS, EPA, NPS, USDA, USFWS